

# The “Smoking Gun” is the PCR Cycle Threshold (Ct): Your Coronavirus Test Is Positive - You Still Might Not Have COVID-19

Exposing Unwelcome Truths About the Deep Flaws of PCR Testing

By [Dr. Gary G. Kohls](#)

Theme: [Intelligence](#), [Science and Medicine](#)

Global Research, January 26, 2021

*New York's state lab has access to the Cycle Threshold (Ct) values from the PCR tests they process. Last July, the lab identified 872 positive tests based on a threshold of 40 cycles.*

If the lab has used a cutoff of 35 cycles, 43 percent of those tests would have been considered negative. What's more, if the cycles had been limited to 30, 63 % of the PCR-positive patients would have been justifiably regarded as negative.

In testing data that include cycle thresholds, officials in Massachusetts, New York and Nevada have found that up to 90 percent of people testing positive carried barely any virus. If that data was extrapolated to nation-wide statistics, the 45,000 new “cases” reported last week perhaps only 4,500 would actually need to isolate and submit to contact tracing

It is obvious that PCR tests need to be interpreted with caution as they do not reflect a true viral load, infectivity or even contagiousness. In fact, many times no viable viruses can be cultured in patients with a positive PCR test result. False positive PCR tests abound, resulting in CDC statistics that have been consistently over-estimating both the incidence rates and mortality rates related to the current epidemic, thus falsely stimulating the panic seen among the many people demanding their vaccinations NOW.

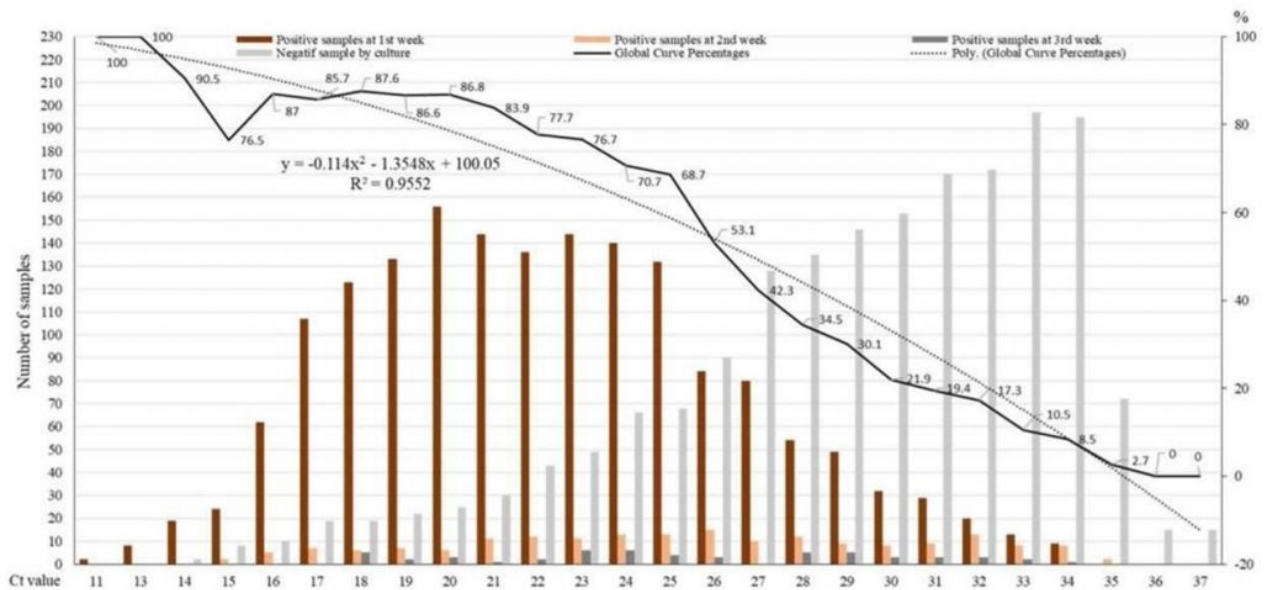
Studies in France, Canada and Singapore, as reported in the August 25, 2020 issue of *Clinical Infectious Diseases*, have tried to culture the Covid-19 virus in patients that had positive PCR test results when the number of “cycles” used in the test exceeded 30. The scientists doing the studies were unable to culture any virus in those patients. Since many PCR test kits in the United States use cycle thresholds that are actually greater than 35, there is a serious problem with the PCR test, which is considered the “gold standard” for diagnosing SARS CoV-2.

In view of the general consensus (including recent acknowledgements from both the WHO and CDC) that PCR cycle thresholds (Ct) above 30 results in increasingly large false positive test rates that approach 100%. (Note that 30 cycles represents a **million** replications of the RNA particles and 40 cycles represents a **trillion** replications.)

If it takes a trillion multiplications of a test before any viral RNA fragments (much less viable viruses) can be identified, you can be sure there are not enough viral particles to cause a disease.

Below is some information that should help people understand why mRNA vaccine hesitancy

makes total sense.



PCR cycle threshold (11-37) and positive cell culture (black line, 100% to 0%). The colored bars indicate the number of positive cell cultures per Ct per week after infection (1 to 3 weeks). ([Jafaar/Raoult](#))

The above chart is from a French research group that has recently shown that at a cycle threshold (Ct) of 25, about 70% of nasopharyngeal samples were viral culture positive (i.e. were infectious). At a Ct of 30, only 20% of the samples were culture positive. And at a Ct of 35, a miniscule 3% of samples remained culture positive. Above 35, all samples were negative.

This means that if a person gets a “positive” PCR test result at a cycle threshold of 35 or higher (as applied in most US labs and many European labs), the chance that the person is infectious is less than 3%. The chance that the person received a “false positive” result is 97% or higher.

The chart above correlates PCR test positivity (black line) with culture results for the tested-for virus (colored bars). If more than 30 cycles are required to get a PCR-positive test result, the cultures will be consistently negative/sterile, meaning that any positive PCR test that only becomes positive after 30 cycles can be called a false positive.

Many PCR test kits on the market use a PCR Ct that is actually above a useless 35! Those kits will naturally result in large numbers of false positives that have already corrupting the CDC’s and Department of Health’s Covid-19 statistics - and also the CDC’s drive to get people inoculated as rapidly as possible with the experimental - and untested for long-term safety and efficacy - the two mRNA vaccines. It is therefore imperative for patients who take a PCR test to know what test kit brands are being used (see partial list below) in your hospital or Public Health Dept laboratory.

Here is a helpful quote:

**“...if a person gets a ‘positive’ PCR test result at a cycle threshold (Ct) of 35 or higher (as applied in most US labs and many European labs), the chance that the person is infectious is less than 3%. The chance that the person received a “false positive” result is 97% or higher.” - Swiss Policy Research**

So, if someone has typical flu symptoms or an influenza-like-illness (ILI) and a positive PCR test that might be a false positive (ie, one that only turns positive at a cycle threshold over 30), perhaps your disease is something other than Covid-19 and shouldn't be reported to the CDC as Covid-19. Something to think about.

**And here are some examples of PCR cycle thresholds for five of the PCR test kit brands that are used in the United States:**

- Quest: 50 cycles
- Inbios: 45 cycles
- Luminex: 45 cycles
- Gnomegen: 39 cycles
- ThermoFisher: 37 cycles

\*

Note to readers: please click the share buttons above or below. Forward this article to your email lists. Crosspost on your blog site, internet forums. etc.

*Dr Gary G. Kohls lives in the USA and writes a weekly column, entitled Duty to Warn, for the Duluth Reader, Duluth, Minnesota's alternative newsweekly magazine. His columns deal with the dangers of American Friendly Fascism, corporatism, Oligarchy, militarism, racism, malnutrition, and Big Pharma's over-drugging and over-vaccinating agendas as well as other movements that threaten the environment, democracy, civility, health and the sustainability and livability of the planet and the future of the children.*

*Dr. Kohls is a past member of Mind Freedom International, the International Center for the Study of Psychiatry and Psychology and the International Society for Traumatic Stress Studies and is a signatory to and/or an advocate of the principles of the Great Barrington Declaration, the World Doctors Alliance and Americas Front Line Doctors. His practice of holistic medicine mainly involved helping the survivors of psychiatry that had often been mis-diagnosed, over-diagnosed and always over-medicated with un-approved and un-tested-for-safety cocktails of neurotoxic psychiatric drugs that not only had sickened them but to which they had also become addicted.*

*His Duty to Warn columns have been re-published around the world for the last decade. They deal frequently also deal with Big Vaccine's over-vaccinating, Big Medicine's over-screening, over-diagnosing and over-treating agendas*

*Many of Dr Kohls' columns have been archived at a number of websites, including:*

[http://duluthreader.com/search?search\\_term=Duty+to+Warn&p=2;](http://duluthreader.com/search?search_term=Duty+to+Warn&p=2;)

<http://www.globalresearch.ca/author/gary-g-kohls;>

<http://freepress.org/geographic-scope/national;>

<https://www.lewrockwell.com/author/gary-g-kohls/?ptype=article;> and

<https://www.transcend.org/tms/author/?a=Gary%20G.%20Kohls,%20MD>

The original source of this article is Global Research

[Comment on Global Research Articles on our Facebook page](#)

[Become a Member of Global Research](#)

Articles by: [Dr. Gary G. Kohls](#)

**Disclaimer:** The contents of this article are of sole responsibility of the author(s). The Centre for Research on Globalization will not be responsible for any inaccurate or incorrect statement in this article. The Centre of Research on Globalization grants permission to cross-post Global Research articles on community internet sites as long the source and copyright are acknowledged together with a hyperlink to the original Global Research article. For publication of Global Research articles in print or other forms including commercial internet sites, contact: [publications@globalresearch.ca](mailto:publications@globalresearch.ca)

[www.globalresearch.ca](http://www.globalresearch.ca) contains copyrighted material the use of which has not always been specifically authorized by the copyright owner. We are making such material available to our readers under the provisions of "fair use" in an effort to advance a better understanding of political, economic and social issues. The material on this site is distributed without profit to those who have expressed a prior interest in receiving it for research and educational purposes. If you wish to use copyrighted material for purposes other than "fair use" you must request permission from the copyright owner.

For media inquiries: [publications@globalresearch.ca](mailto:publications@globalresearch.ca)