

# **The Search for Malaysian Airlines MH370. Unanswered Questions. Wreck of Unidentified Aircraft in Bay of Bengal? Crucial Information Withheld**

By [GeoResonance](#)

Global Research, June 30, 2014

[GeoResonance](#)

Region: [Asia](#), [Oceania](#)

Theme: [Law and Justice](#), [Science and  
Medicine](#)

*The staff at GeoResonance are not prone to conspiracy theories, we all deal with facts and science. It appears some of the authorities involved in the search have not been completely transparent with all of the facts. The MH370 tragedy has created more world interest than any event since 9/11, under those circumstances 100% transparency is a must. There are many unanswered questions.*

The families and friends of those on board MH370 are dismayed that Inmarsat admitted the raw data released was only enough to prove their original model. Everyone was expecting all of the raw data to be released which would have allowed alternative models to be created. This could have shown up any errors that may exist in the original model which “assumes” MH370 ended up in the Southern Indian Ocean.

Many people are asking why the Australian over the horizon radar Jindalee Operational Radar Network (JORN) did not see MH370. The map below showing the JORN range is taken from an Australian Air Force fact sheet on JORN ([https://www.airforce.gov.au/docs/JORN\\_Fact\\_Sheet.pdf](https://www.airforce.gov.au/docs/JORN_Fact_Sheet.pdf)):

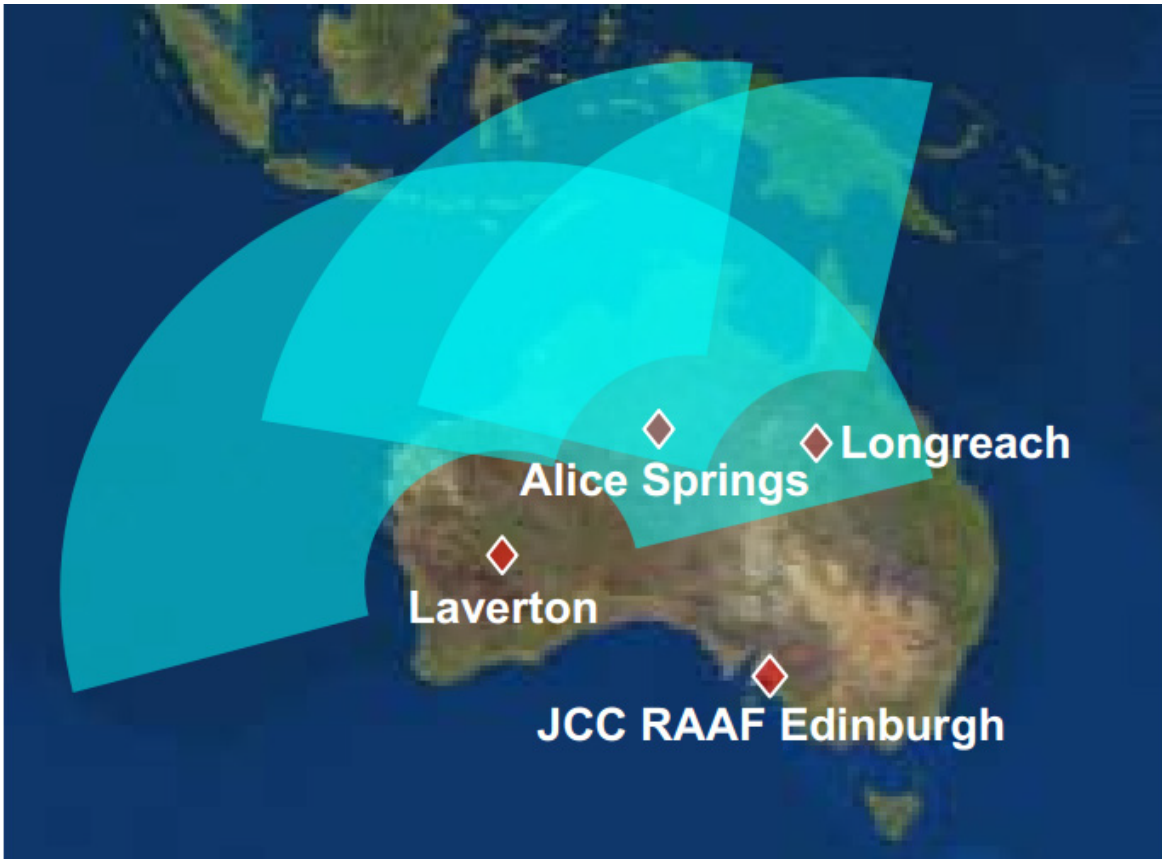
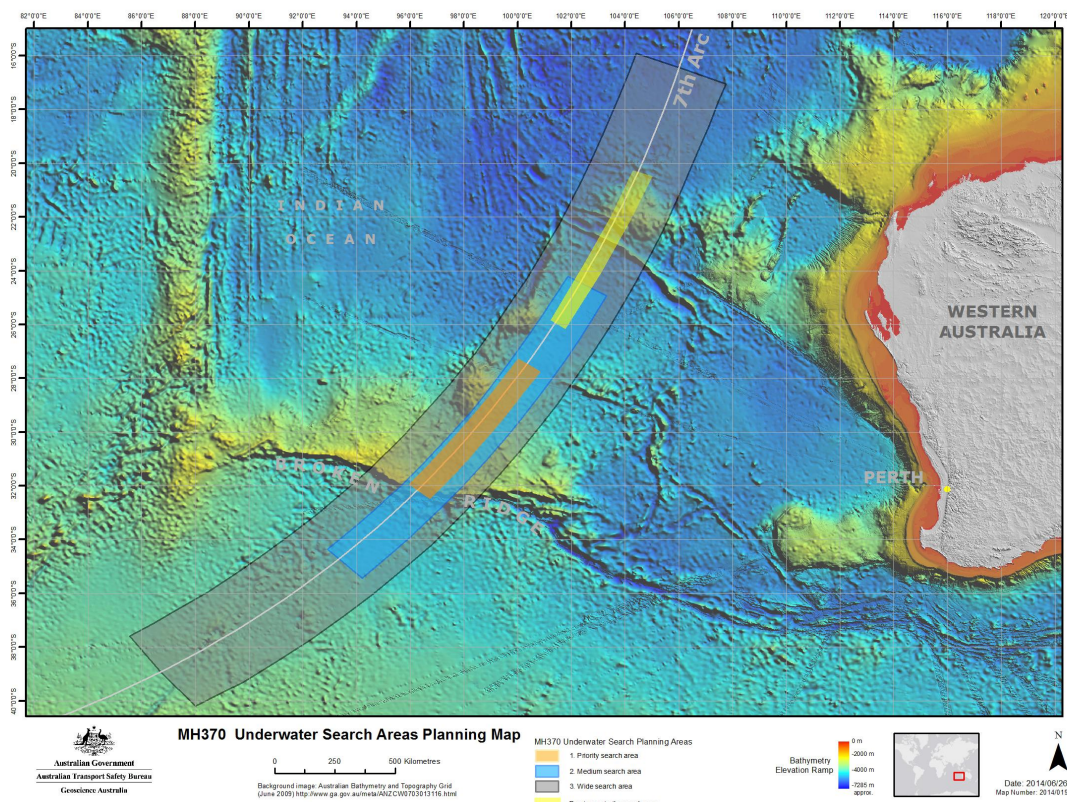


Figure 1. JORN radar locations and coverage

On 26th of June 2014, the Deputy Prime Minister Warren Truss presented the latest search area in the Southern Indian Ocean:



## Figure 2. New MH370 search zone

It is clear if MH370 did fly along or land on the assumed Inmarsat Southern arc flight path, then JORN would have seen it to the North/West and West of Australia. One report suggests the Laverton based radar may have been looking North for Asylum seekers arriving by boat. If this is reality it would have been looking to the North and West of Christmas Island as that is where nearly all boats head to or past when making for Australia from Indonesia. No matter which direction the Laverton radar was looking whether North or West, it should have seen a large commercial aircraft on the assumed Southern arc. Angus Houston representing JACC and Martin Dolan Chairman of ATSB have stated numerous times the Inmarsat model of a Southern arc is a fact. Family members and experts are asking the Australian authorities why JORN did not see MH370 if the Southern arc is indeed a fact. They have been given flawed logic on radar direction, but mainly silence. Independent investigators will be asking the Australian Government many questions on this topic.

The families are asking why some commercial cargo remains unidentified. Considering the scale of this tragedy all details must be released. The families want to know why the Malaysian Government would withhold such crucial information.

The families also would like to know why Rolls Royce will not release the data on pings sent from MH370 at: 2:25am, 2:27am and 8:19am. The pings at 2:25am and 2:27am are out of the ordinary, as pings should normally be sent every hour only unless there is a problem with an engine. The data would normally include engine performance details as well as other aircraft data.

GeoResonance stands by its claim that we have located what appears to be the wreck of an aircraft 190km South of the Bangladesh coastline in 1,000 to 1,100 metres of water. We have never claimed this to be MH370, however it is a lead that must be thoroughly followed through. It has been confirmed that the precise location supplied by GeoResonance to all authorities involved in the search for MH370 has not been searched. The main reason for ignoring the location is the Australian Transport and Safety Bureau (ATSB) Chairman Martin Dolan making a statement that GeoResonance methodology cannot do what we claim. This is without ever having anyone contacting GeoResonance for a technical presentation. This slanderous and ignorant statement by a senior public servant is unfathomable when GeoResonance regularly produces accurate results for commercial clients around the globe.

GeoResonance staff wish all of the families and friends of those on board MH370 all the best in the continued search for their loved ones.

The original source of this article is [GeoResonance](#)  
Copyright © [GeoResonance](#), [GeoResonance](#), 2014

---

[Comment on Global Research Articles on our Facebook page](#)

[Become a Member of Global Research](#)

Articles by: [GeoResonance](#)

**Disclaimer:** The contents of this article are of sole responsibility of the author(s). The Centre for Research on Globalization will not be responsible for any inaccurate or incorrect statement in this article. The Centre of Research on Globalization grants permission to cross-post Global Research articles on community internet sites as long the source and copyright are acknowledged together with a hyperlink to the original Global Research article. For publication of Global Research articles in print or other forms including commercial internet sites, contact: [publications@globalresearch.ca](mailto:publications@globalresearch.ca)

[www.globalresearch.ca](http://www.globalresearch.ca) contains copyrighted material the use of which has not always been specifically authorized by the copyright owner. We are making such material available to our readers under the provisions of "fair use" in an effort to advance a better understanding of political, economic and social issues. The material on this site is distributed without profit to those who have expressed a prior interest in receiving it for research and educational purposes. If you wish to use copyrighted material for purposes other than "fair use" you must request permission from the copyright owner.

For media inquiries: [publications@globalresearch.ca](mailto:publications@globalresearch.ca)