

## “Artworks for Peace”: Support Global Research

By [Global Research](#) and [Global Research](#)

Global Research, November 22, 2017

*Thanks to the support of our fundraising activity by Montreal artist Louise Ladouceur, we are in a position to offer an original woodblock printing to Global Research supporters who make a donation starting at US\$300 (including shipping and handling)*

*For US Residents a Tax Receipt for deductible charitable contributions can be provided for donations to Global Research in excess of \$400.00 through our fiscal sponsorship program. If you are a US resident and wish to make a donation of \$400 or more, contact us at [crg.online@yahoo.com](mailto:crg.online@yahoo.com) (please indicate “US Donation” in the subject line) and we will send you the details. We are much indebted for your support.*

[Louise Ladouceur](#) is renowned for her unique ability to create vibrant and expressive woodblock printings, using ancient techniques with contemporary styling, and has staged exhibits across Canada, the United States, Western Europe and Japan. Her works are also contained in several public and private collections including Quebec’s National Library (Bibliothèque Nationale du Québec).

Each piece in this collection depicts a different message.

We encourage you to make a donation to Global Research and help spread the message of peace embodied in these works.

Scroll down for further information and images of available woodblock printings.

The number of original prints in each edition varies between 10 and 12. The market value of these original woodblock printings is in excess of the suggested [donation](#).

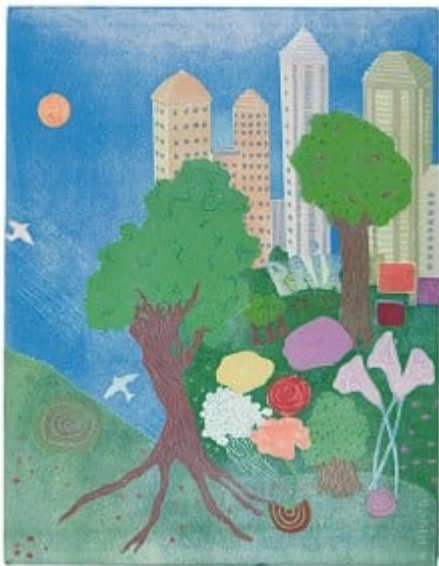


*From Visibility to Invisibility* 2004

Dimensions: 40 x 25.5 cm

*Beyond the beauty of the world, a great force guides us towards a peaceful silence.*

Suggested donation \$300+



*Wind for the Rose 2012*

Engraved wood, Dimensions: 59 x 46 cm

*The rose, a peace symbol, draws power in the hope of reconciliation among nations. A wind of tranquility for humans. The rising city keeps nature's balance as an inspiration.*

Suggested donation \$500+



*Revolution Around the Rose 2012*

Dimensions: 46 x 48.5 cm

*Different parts of the world keep linking and exchanging, moving around the rose. A*

*revolution with a wind of change for peace in the universe.*

Suggested donation \$450



*Coeur atout pour la paix (Heart trumps for peace) 2003*

Dimensions : 54 x 25 cm

*Beams of colour signify diversity and complementarity while the heart and clover bring peace and warmth. A rotation of the needle places us in an opportune moment.*

Suggested donation \$300+



*Consensus pour la rose (Consensus for the rose) 2003*

Dimensions : 76 x 32 cm

*The image of a woman fighting for life and love, surrounded by a colourful mosaic representative of our diverse planet.*

Suggested donation \$400+

**DONATE AND ACQUIRE AN ORIGINAL WOODBLOCK PRINTING**

#### 1. Online

If you are able to make a donation to Global Research of \$300 or more, click button below for online donations. Kindly also indicate in a separate email message to [crg.online@yahoo.com](mailto:crg.online@yahoo.com), which woodblock printing you wish to acquire.

Also be sure to confirm your mailing address. Shipping and handling is included. The woodblock printing is sent unframed.

[To donate and acquire an original woodblock, visit our donation page](#) (paypal and credit card transactions)

#### 2. by Mail

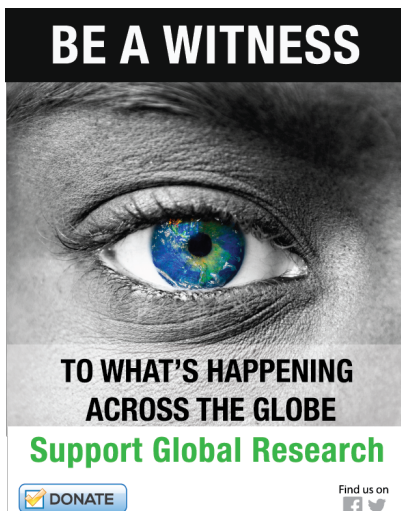
Kindly send your cheque or money order to the following address:

Clearly indicate which woodblock printing you would like to acquire. Also be sure to confirm your mailing address. Shipping and handling is included

Centre for Research on Globalization (CRG)  
PO Box 55019  
11 Notre-Dame Ouest,  
MONTREAL, Qc, H2Y 4A7  
CANADA

For donations from the US, the money order should be "International" payable outside the US

To reach us by email: [crg.online@yahoo.com](mailto:crg.online@yahoo.com)



Please Note that for US Residents: Tax Receipts for deductible charitable contributions by US residents can be provided for donations to Global Research in excess of \$400.00 through our fiscal sponsorship program.

If you are a US resident and wish to acquire a woodblock printing and make a donation of \$400 or more, contact us at [crg.online@yahoo.com](mailto:crg.online@yahoo.com) (please indicate "US Donation" in the subject line) and we will send you the details. We are much indebted for your support.

DONATE TO GLOBAL RESEARCH OR BECOME MEMBER

To make a (one time) donation and/or [become a Member](#). Any amount large or small will contribute to supporting Global Research

[DONATE AND/OR BECOME A MEMBER](#) (link to donation page)

The original source of this article is Global Research  
Copyright © [Global Research](#) and [Global Research](#), Global Research, 2017

---

[Comment on Global Research Articles on our Facebook page](#)

[Become a Member of Global Research](#)

Articles by: [Global Research](#)  
and [Global Research](#)

**Disclaimer:** The contents of this article are of sole responsibility of the author(s). The Centre for Research on Globalization will not be responsible for any inaccurate or incorrect statement in this article. The Centre of Research on Globalization grants permission to cross-post Global Research articles on community internet sites as long the source and copyright are acknowledged together with a hyperlink to the original Global Research article. For publication of Global Research articles in print or other forms including commercial internet sites, contact: [publications@globalresearch.ca](mailto:publications@globalresearch.ca)

[www.globalresearch.ca](http://www.globalresearch.ca) contains copyrighted material the use of which has not always been specifically authorized by the copyright owner. We are making such material available to our readers under the provisions of "fair use" in an effort to advance a better understanding of political, economic and social issues. The material on this site is distributed without profit to those who have expressed a prior interest in receiving it for research and educational purposes. If you wish to use copyrighted material for purposes other than "fair use" you must request permission from the copyright owner.

For media inquiries: [publications@globalresearch.ca](mailto:publications@globalresearch.ca)